

Fall 2005 / Volume 10 / Issue 1

INFORMAVE

Mary and Jeff Bell Library
Texas A&M University-Corpus Christi

Inside this Wave Catch...

Journal Access.....	1
First Amendment	
Exhibits.....	1
Wireless Access.....	2
Personnel News.....	3
Special Collections.....	4

Library Provides Improved Journal Access

By Sarah Sutton

The Library's Periodical Holdings List, or PHL, is a complete listing of all of the journals, magazines, and newspapers to which the Library subscribes. It includes subscriptions that are owned in print, on microfilm and microfiche, as well as those to which online access is provided. All of the online subscriptions it includes are those in which full articles are available. It excludes those online subscriptions that only provide article summaries (those are available in the full list of databases to which the library subscribes).

The PHL is new and improved this fall! It is now available from off campus as well as on campus. That means that students, faculty, and staff can now retrieve articles they need from home! Remember that while you can access articles through it, the PHL is a search mechanism for journals, not for articles. Use it when you already know what journal your article is published in or when you want to browse for journals on a particular subject. Once you've found the journal, the PHL provides a direct link to either the database in which the full text of the journal is available or to the library catalog where you'll find information about how to locate the print or microform version of the journal in the library. *cont. on pg 2*

Library Hours Fall 2005

Mon. - Thurs.
7:30a.m. - 1:30a.m.
Friday
7:30a.m. - 8:00p.m.
Saturday
10:00a.m. - 8:00p.m.
Sunday
Noon - 1:30a.m.

Reference Services

Mon. - Thurs.
8:00a.m. - 10:00p.m.
Friday
8:00a.m. - 8:00p.m.
Saturday
10:00a.m. - 8:00p.m.
Sunday
Noon - 10:00p.m.

Library Media Center

Mon. - Thurs.
7:30a.m. - 1:15a.m.
Friday
7:30a.m. - 7:45p.m.
Saturday
10:00a.m. - 7:45p.m.
Sunday
2:00p.m. - 1:15a.m.

Library Instruction Center

Mon. - Thurs.
8:00a.m. - 12:00a.m.
Friday
8:00a.m. - 5:00p.m.
Saturday
10:00a.m. - 6:00p.m.
Sunday
2:00p.m. - 12:00a.m.

Special Collections & Archives

Mon. - Fri.
8:00a.m. - 5:00p.m.
and by appointment

Library to Host Exhibit on First Amendment Freedoms

By Sue Willman and Denise Landry-Hyde

TAMU-CC is one of about 400 colleges and universities throughout the country taking part in the American Association of State Colleges & Universities (AASCU)-sponsored American Democracy Project (ADP), <http://www.aascu.org/programs/adp/about/default.htm>. The goal of the project is to educate graduates "who understand and are committed to engaging in meaningful actions as citizens in a democracy."

One of the ways during the upcoming academic year that our campus will focus on the value of civic engagement is to discuss and study, in a variety of classes, First Amendment Freedoms—freedom of religion, speech, press, assembly, and petition. In an effort to support this cross-disciplinary dialog, Bell Library will set up on its first floor an exhibit highlighting first amendment freedoms. The exhibit will run a month-and-a-half to two months, beginning with the start of the 2005-2006 academic year.

A component of this display will focus on intellectual freedom as articulated in the American Library Association's (ALA) issue documents, such as Intellectual Freedom Principles for Academic Libraries, the Library Bill of Rights, and the Freedom to Read Statement.

One way ALA raises awareness of threats to the freedom to read is through Banned Books Week. This year the dates are September 24th to October 1st. The most frequently challenged books since 1990, sought to be banned from various libraries, will be featured on special shelving in the exhibit area and will be available for check out. We encourage faculty to offer incentives for students to read these books and reflect on the importance of our freedom to choose what we read without censorship. *cont. on pg 2*

Wireless Access for Laptops Available in Library Building

To make Internet access easier for laptop users, the Library has installed eight wireless access points throughout the building.

All of the Library Media Center's laptops are already registered on the campus network, and they can access the Internet anywhere in the building.

However, if you would like to use your own laptop to access the Internet, you will need to register it on the campus wireless network. Just follow these quick and easy steps:

1. Go to <http://owl.tamucc.edu>
2. Once you are on this page, click on "Wireless Device Registration".
3. On the registration page, click on either Student Registration or Faculty/Staff Registration. You will need to read through the

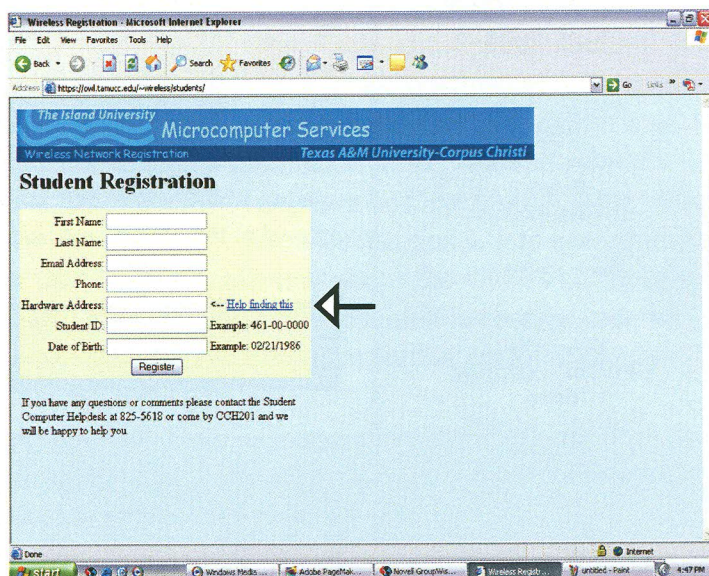
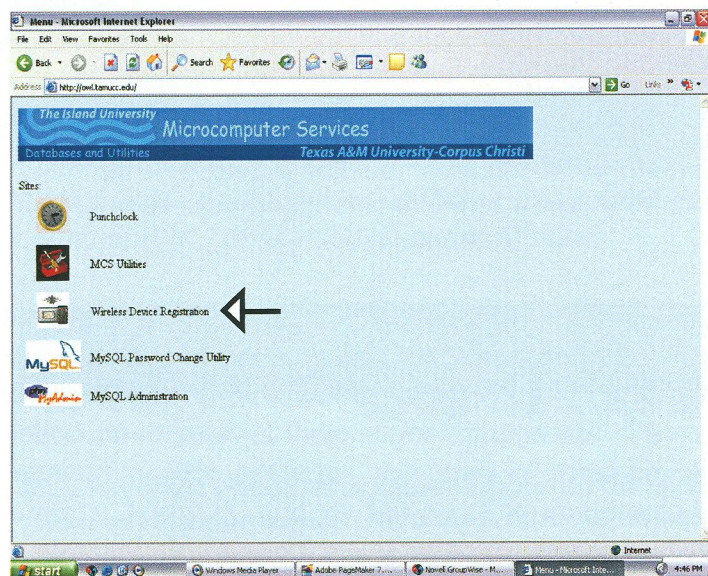
conditions of use and then select whether you agree with the conditions. If you agree with the conditions, select that option and click on "Continue".

4. On the next screen, you will fill out the online registration form. Hint: If you are not sure how to locate your hardware address, click on "[Help Finding This](#)". This help-screen will walk you step-by-step to locate the hardware address.

5. Write down the number of your hardware address and then fill out the rest of the registration form. Then click on "Register".

Wireless registration will allow you to access the Internet in all buildings on campus that have wireless access points.

If you have any questions about wireless registration, please call Computer Services at 825-5618. You may also request assistance in Corpus Christi Hall Room 201.



Library Provides Improved Journal Access

cont. from pg 1

Another great feature of the new and improved PHL is the subject categories. Using the same subject categories that the library uses to group its books and other materials (called Library of Congress classification), the PHL provides lists of journals by subject category. Use the subject tab to view a list of subjects included in the PHL and the number of journals the library makes available in each subject category. Each subject is a link to a detailed list of the journals, magazines, and newspapers in that category and how to find them.

Please try out the new PHL today! You'll find a link at the bottom of almost all of the library's web pages under Quick Links. And don't forget to call the Reference Desk (825-2609) if you need help using the new PHL.

Library to Host Exhibit on First Amendment Freedoms

cont. from pg 1

Some related links for First Amendment Issues include:

First Amendment Center

<http://www.firstamendmentcenter.org/?src=overture>

ALA - Intellectual Freedom Statements and Policies

<http://www.ala.org/ala/oif/statementspols/statementspolicies.htm>

ALA - Banned Books Week

<http://www.ala.org/ala/oif/bannedbooksweek/bannedbooksweek.htm>

ALA - Challenged and Banned Books

<http://www.ala.org/ala/oif/bannedbooksweek/challengedbanned/challengedbanned.htm>

Library and Personnel Events

Congratulations to **Cindy Bates**, Administrative Assistant, for receiving one of the University's Employee Excellence Awards for 2004 - 2005.

Congratulations to **Sally Bickley**, Reference Services Coordinator, on the arrival of a grandson, Caelum Demetri Scott, on October 26; and to **Virginia Hopkins**, Library Associate I, on the arrival of her 1st grandchild, Ena June Buckley, on June 7.

Congratulations to **Christine Freeman**, Library Associate II, who earned a Master's in Library Science in May from Texas Woman's University. Christine was also the North American Serials Interest Group 2005 Student Award Winner.

Edward Kownslar attended the Depository Library Conference in Washington, D.C., October 17-20, 2004.

Sally Bickley, Christine Freeman, Denise Landry-Hyde and Paula Scott attended the Texas Library Association's District IV meeting in Port Aransas on October 15, 2004.

Paula Scott attended the South Central Chapter of the Medical Library Association Conference in Houston, TX, in October 2004. Paula also attended the Medical Library Association Conference in San Antonio in May 2005.

Christine Shupala, Sally Bickley, Sarah Sutton and Edward Kownslar attended the American Library Association Midwinter Meeting in Boston, MA, January 14-18, 2005.

Edward Kownslar, Laura Martinez, Sally Bickley, Denise Landry-Hyde, Christine Freeman, Deanna Solomon and Sue Willman attended the Texas Library Association's Annual Conference in Austin, TX, in April 2005.

Deanna Solomon attended the Innovative Interfaces "Advance Systems Access and Administration Workshops" in Emeryville, CA, then went on to the Innovative Users Group Annual Conference in San Francisco, CA, April 28- May 4, 2005.

Christine Shupala, Sally Bickley, Edward Kownslar, Sarah Sutton and Sue Willman attended the American Library Association Annual Conference in Chicago, IL, in June 2005.

Several Library staff members have moved on to other opportunities. **Robert Rios**, Library Associate II for Media Services, left his position in August, 2004; **Jose Gonzalez**, Library Associate II for Interlibrary Loan, left his position in September 2004; **Brianne Sharrar**, who was previously a Library Associate I for Technical Services, left her position in September 2004; **Marcial Reza**, Library Associate I for Access Services, left his position in May 2005; and **Steven Barrera**, who was the Library Associate II for Access Services, who left his position in August 2005. Thank you for your good work, and best of luck with your careers!



The Library would like to welcome five new employees. **Jennifer Atherton** was hired as the Library Associate II for Access Services in July 05; **Patricia Buenano** was hired as a Library Associate II for Technical Services in November 04; **Olympia Reeves** was hired as the Library Associate II, Night Supervisor, in Media in October 04; and **Robert Roper** was hired as a Systems Support Specialist I in September 04.

The Library would like to also welcome **Alita Pierson**, who began working as the Government Documents Librarian in August. Alita previously worked in the Government Publications Department at the University of Washington, and she also worked as a Library Diversity Graduate Intern at Oberlin College in Oberlin, Ohio. Alita earned a Master's in Library Science from the University of Washington and a Bachelor's in Art History from Oberlin College.

Audrey Flores, student assistant for Special Collections & Archives and history graduate student, is shown archivally processing the recently acquired Gold Photography Collection. Already involved in public history, Ms. Flores is thus adding another dimension to her education through her work with the Gold Collection.



The Mary and Jeff Bell Library, The Office of Graduate Studies & Research and The Women's Center for Education & Service hosted the annual Faculty Publication Reception & "The Academy Speaks" on April 13, 2005. This reception recognizes those faculty and staff who made scholarly contributions to their fields in 2004 and to view the works of student scholars. Dr. Vanessa Jackson was this year's recipient of the Excellence in Creative/Scholarly Activity Award for 2004/2005.



Dr. Sandra Harper, Provost; Dr. Vanessa Jackson; and Dr. Richard Gigliotti, Dean of Arts & Humanities. Photo by: Jeff Janko, Publications Office

Wireless Access for Laptops Available in Library Building

To make Internet access easier for laptop users, the Library has installed eight wireless access points throughout the building.

All of the Library Media Center's laptops are already registered on the campus network, and they can access the Internet anywhere in the building.

However, if you would like to use your own laptop to access the Internet, you will need to register it on the campus wireless network. Just follow these quick and easy steps:

1. Go to <http://owl.tamucc.edu>
2. Once you are on this page, click on "Wireless Device Registration".
3. On the registration page, click on either Student Registration or Faculty/Staff Registration. You will need to read through the

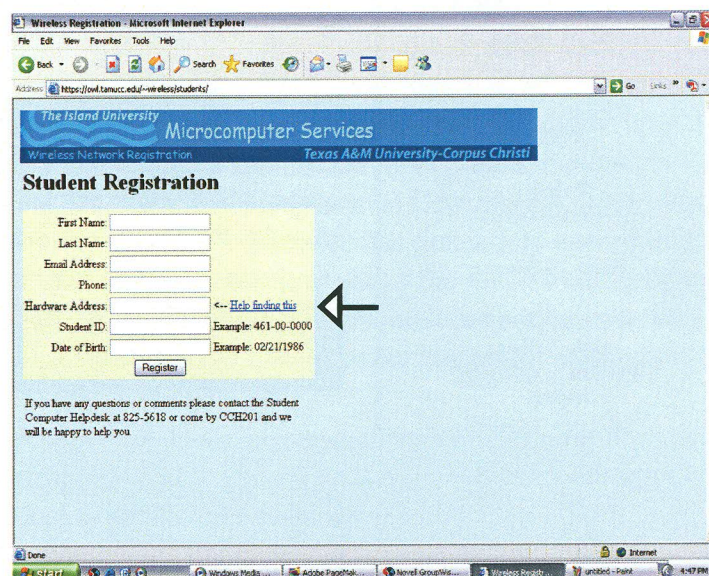
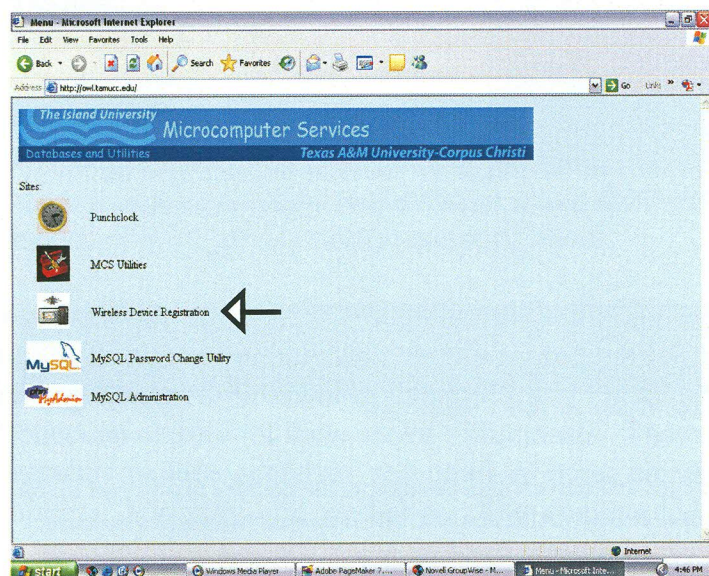
conditions of use and then select whether you agree with the conditions. If you agree with the conditions, select that option and click on "Continue".

4. On the next screen, you will fill out the online registration form. Hint: If you are not sure how to locate your hardware address, click on "Help Finding This". This help-screen will walk you step-by-step to locate the hardware address.

5. Write down the number of your hardware address and then fill out the rest of the registration form. Then click on "Register".

Wireless registration will allow you to access the Internet in all buildings on campus that have wireless access points.

If you have any questions about wireless registration, please call Computer Services at 825-5618. You may also request assistance in Corpus Christi Hall Room 201.



Library Provides Improved Journal Access

cont. from pg 1

Another great feature of the new and improved PHL is the subject categories. Using the same subject categories that the library uses to group its books and other materials (called Library of Congress classification), the PHL provides lists of journals by subject category. Use the subject tab to view a list of subjects included in the PHL and the number of journals the library makes available in each subject category. Each subject is a link to a detailed list of the journals, magazines, and newspapers in that category and how to find them.

Please try out the new PHL today! You'll find a link at the bottom of almost all of the library's web pages under Quick Links. And don't forget to call the Reference Desk (825-2609) if you need help using the new PHL.

Library to Host Exhibit on First Amendment Freedoms

cont. from pg 1

Some related links for First Amendment Issues include:

First Amendment Center

<http://www.firstamendmentcenter.org/?src=overture>

ALA - Intellectual Freedom Statements and Policies

<http://www.ala.org/ala/oif/statementspols/statementspolicies.htm>

ALA - Banned Books Week

<http://www.ala.org/ala/oif/bannedbooksweek/bannedbooksweek.htm>

ALA - Challenged and Banned Books

<http://www.ala.org/ala/oif/bannedbooksweek/challengedbanned/challengedbanned.htm>

Special Collections & Archives: The Gold Photography Collections

By Dr. Thomas H. Kreneck

Special Collections & Archives is proud to announce the acquisition of the Gold Photography Collection. The Gold Collection contains the negative morgue and prints of the Gold Photography studio, which was owned and operated by Mr. and Mrs. Sammy Gold. The collection consists of several hundred thousand images of Corpus Christi from the mid 1940s when Mr. and Mrs. Gold came to this city and began their business until 2004 when Mr. Gold passed away. Donated by Mrs. Sammy (Emily) Gold, the Gold Photography Collection is a definitive visual record of Corpus Christi during the last half of the twentieth century. As such, the collection is the most significant photographic acquisition in the University's history and ranks among the most important donations in the development of Special Collections & Archives.

A master photographer, the late Sammy Gold was one of the most accomplished, prolific professional photographers ever to reside in Corpus Christi. The Gold Collection consists of three major components. These segments include negatives and prints of commercial subjects, portraits, and weddings. The commercial images include the spectrum of human endeavor in our city: skylines, architecture, industrial scenes, religious ceremonies, group photos, festivals, and many other

activities. The portraits contain individuals from many different walks of life, while the weddings show the evolution of that social and religious event over the decades. Most important, all the images are identified. The Gold Photography Collection contains a visual record of Corpus Christi during its most significant period of growth and permanently includes thousands of people in the historical record of our city.



Sammy Gold, Photograph by Emily Gold

Special Collections & Archives was greatly assisted in this acquisition by Ms. Pat Eisenhower who brought Mrs. Gold and Special Collections & Archives together. Mrs. Gold was honored for her generosity with a luncheon hosted by Mrs. Robert R. Furgason on December 3, 2004. She likewise has graciously agreed to do

an oral history interview about the Gold Photography studio to supplement this magnificent collection. Mrs. Gold's donation is a treasure for the entire community.

Editor.....Edward Kownslar
Assistant Editor.....Sally Bickley
Production/Subscription Editor.....Cindy Bates
Printing by.....Campus Copies
Visit the Bell Library's website: <http://rattler.tamucc.edu/>



Texas A&M University-Corpus Christi
Mary & Jeff Bell Library
6300 Ocean Drive - Unit 5702
Corpus Christi, TX 78412 - 5702